

ORDINANCE NO. 68-2013

AN ORDINANCE OF THE CITY OF ABILENE, TEXAS, AMENDING CHAPTER 23, "LAND DEVELOPMENT CODE," OF THE ABILENE MUNICIPAL CODE, BY CHANGING THE ZONING DISTRICT BOUNDARIES AFFECTING CERTAIN PROPERTIES; CALLING A PUBLIC HEARING; PROVIDING A PENALTY AND AN EFFECTIVE DATE.

BE IT ORDAINED BY THE CITY COUNCIL OF THE CITY OF ABILENE, TEXAS:

PART 1: That Chapter 23, part known as the Land Development Code of the City of Abilene, is hereby amended by changing the zoning district boundaries as set out in Exhibit "A," attached hereto and made a part of this ordinance for all purposes.

PART 2: That any person, firm or corporation violating any of the provisions of this chapter shall be deemed guilty of a misdemeanor, and upon conviction thereof, shall be punished by a fine of not more than Five Hundred Dollars (\$500.00). Each day such violation shall continue or be permitted to continue, shall be deemed a separate offense.

PART 3: That the Planning Director be, and is hereby authorized and directed to change the official Zoning Map of the City of Abilene to correctly reflect the amendments thereto.

PASSED ON FIRST READING this 21st day of November, A.D. 2013.

A notice of the time and place, where and when said ordinance would be given a public hearing and considered for final passage, was published in the Abilene Reporter-News, a daily newspaper of general circulation in the City of Abilene, said publication being on the 18th day of October, 2013, the same being more than fifteen (15) days prior to a public hearing to be held in the Council Chamber of the City Hall in Abilene, Texas, at 8:30 a.m., on the 5th day of December, 2013 to permit the public to be heard prior to final consideration of this ordinance. Said ordinance, being a penal ordinance, becomes effective ten (10) days after its publication in the newspaper, as provided by Section 19 of the Charter of the City of Abilene.

PASSED ON SECOND AND FINAL READING THIS 5th day of December, A.D. 2013.

ATTEST:


CITY SECRETARY


MAYOR

APPROVED:

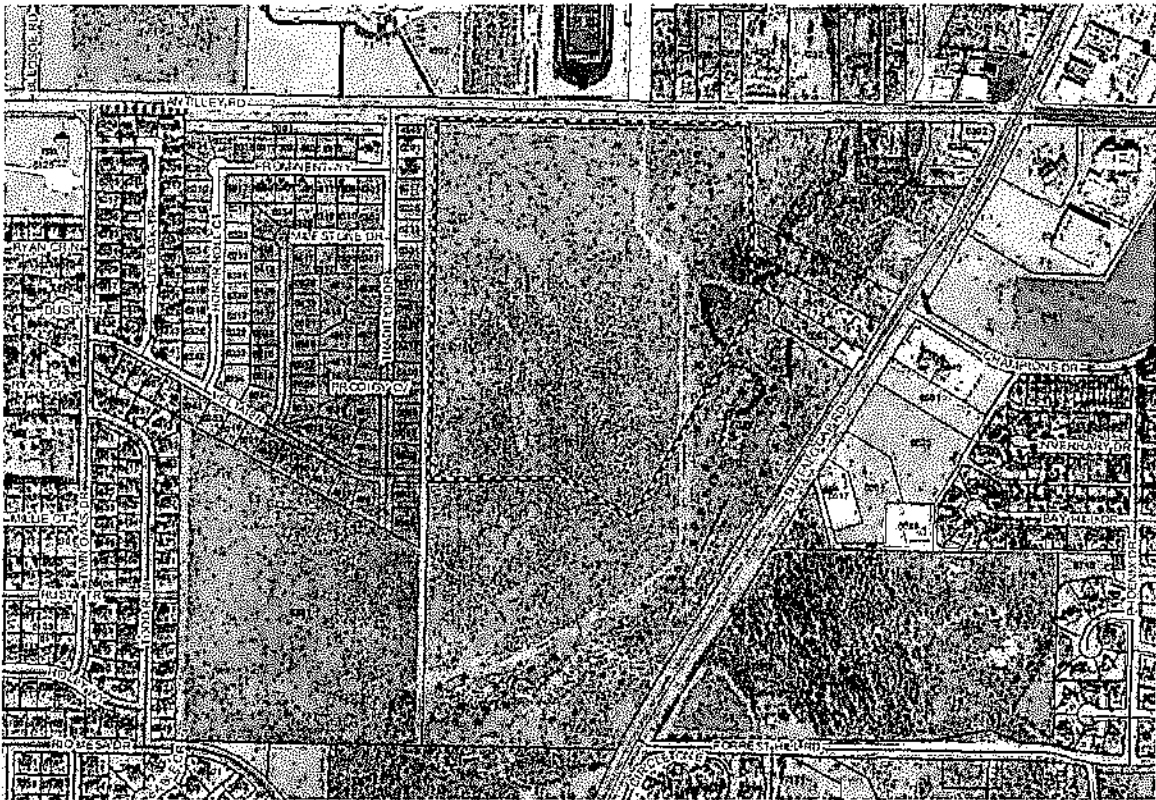

CITY ATTORNEY

ORDINANCE NO. 68-2013

EXHIBIT "A"

Rezone property from AO (Agricultural Open Space) & RS-8 (Single-Family Residential) to RS-6 (Single-Family Residential) district.

Legal Description:



**FIELD NOTES
FOR
A 48.563 ACRE TRACT
OUT OF
THE W. E. VAUGHN SURVEY NO. 101
ABILENE, TAYLOR COUNTY, TEXAS**

BEING a 48.563-acre tract out of the W. E. Vaughn Survey No. 101, Abilene, Taylor County, Texas, and being out of an 89.68-acre tract conveyed to Donald D. Bledsoe, recorded in Instrument Number 2013-5232, Official Public Records, Taylor County, Texas. The said 48.563-acre tract being more particularly described as follows:

BEGINNING at a point on the south right of way of Antilley Road for the northwest corner of the said 89.68-acre tract;

THENCE South 89 degrees 53 minutes 22 seconds East, along the south right of way of Antilley Road, for a distance of 910.83 feet to a point of curvature;

THENCE along the south right of way of Antilley Road, being a curve to the right having a radius of 2784.79 feet and an arc length of 46.29 feet, being subtended by a chord South 89 degrees 29 minutes 49 seconds East for a distance of 46.29 feet to a point of tangency;

THENCE South 88 degrees 48 minutes 47 seconds East, along the south right of way of Antilley Road, for a distance of 123.33 feet to a point of curvature;

THENCE along the south right of way of Antilley Road, being a curve to the left having a radius of 2944.79 feet and an arc length of 75.03 feet, being subtended by a chord South 89 degrees 45 minutes 53 seconds East for a distance of 75.03 feet to a point of tangency;

THENCE North 89 degrees 37 minutes 23 seconds East, along the south right of way of Antilley Road, for a distance of 235.77 feet to a point for the northeast corner of this tract;

THENCE South 04 degrees 05 minutes 57 seconds East for a distance of 666.96 feet to a point;

THENCE South 60 degrees 54 minutes 00 seconds East for a distance of 90.27 feet to a point;

THENCE South 30 degrees 55 minutes 39 seconds West for a distance of 1146.58 feet to a point for the southeast corner of this tract;

THENCE North 62 degrees 27 minutes 38 seconds West for a distance of 119.01 feet to a point of curvature;

THENCE with a curve to the left having a radius of 500.00 feet and an arc length of 240.31 feet, being subtended by a chord North 76 degrees 13 minutes 45 seconds West for a distance of 238.00 feet to a point of tangency;

THENCE North 89 degrees 59 minutes 53 seconds West for a distance of 584.87 feet to a point for the southwest corner of this tract;

THENCE North 00 degrees 15 minutes 00 seconds West for a distance of 1584.51 feet to the Point of Beginning having an area of 48.563 acres, or 2115395 square feet.

Location:

Being 48.563 acres located on the south side of the 4300-4400 block of Antilley Rd

-END-