

ORDINANCE NO. 4-2001

AN ORDINANCE OF THE CITY OF ABILENE, TEXAS, AMENDING CHAPTER 23, SUBPART E, "ZONING," OF THE ABILENE MUNICIPAL CODE; AND ORDINANCE NO. 30-2000 CONCERNING THE PDD #73 PLANNED DEVELOPMENT DISTRICT; DECLARING A PENALTY AND CALLING A PUBLIC HEARING; AND AN EFFECTIVE DATE.

BE IT ORDAINED BY THE CITY COUNCIL OF THE CITY OF ABILENE, TEXAS:

PART 1: That Chapter 23, Subpart E, known as the Zoning Ordinance of the City of Abilene, is hereby amended by changing Ordinance No. 30-2000, as set out in Exhibit "A," attached hereto and made a part of this ordinance for all purposes.

PART 2: That any person, firm or corporation violating any of the provisions of this chapter shall be deemed guilty of a misdemeanor, and upon conviction thereof, shall be punished by a fine of not more than Two Thousand Dollars (\$2,000.00). Each day such violation shall continue or be permitted to continue, shall be deemed a separate offense.

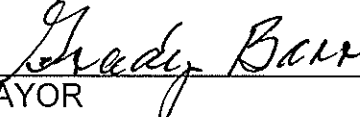
PASSED ON FIRST READING this 8 day of February A.D. 2001.

A notice of the time and place, where and when said ordinance would be given a public hearing and considered for final passage, was published in the Abilene Reporter-News, a daily newspaper of general circulation in the City of Abilene, said publication being on the 28 day of January, 2001, the same being more than fifteen (15) days prior to a public hearing to be held in the Council Chamber of the City Hall in Abilene, Texas, at 9:00 a.m., on the 22 day of February, 2001, to permit the public to be heard prior to final consideration of this ordinance. Said ordinance, being a penal ordinance, becomes effective ten (10) days after its publication in the newspaper, as provided by Section 20 of the Charter of the City of Abilene.

PASSED ON SECOND AND FINAL READING THIS 22 day of February, A.D. 2001.

ATTEST:

  
CITY SECRETARY

  
MAYOR

APPROVED:

  
CITY ATTORNEY

EXHIBIT "A"

1st Amendment to Ordinance No.30-2000

AMEND: Part 7: Specific Modifications B.4.

DELETE: 4. Park identification & landscaping will be located at three strategic sites, as designated in the attached site plan: one adjacent to the regional detention area, one at the southeast corner of Fulwiler and Interstate 20 and one at the intersection of Arnold Blvd. (F.M. 3438) and Marigold Street. These areas will be lighted and landscaped. The City of Abilene will be responsible for maintenance of the park identification sites. Signage in these park identification and landscaping areas will identify the Park and its tenants.

ADD: 4. Park identification and landscaping shall be provided within easements at the following location:

- Northwest corner of Business Hwy 80 and FM 3438 – Arnold Blvd.

Graphics and copy shall include Park name and name and/or logo of companies within the Park. Graphics and copy materials will be surface applied aluminum or bronze.

Design of signage is as indicated on attached Exhibit "B".

The City of Abilene will be responsible for maintenance of the Park identification sites.

AMEND: Part 7: Specific Modifications B.16.

DELETE: 16.

Internal Site Directional Signage:

- Post and panel system
- Single or double faced
- Maximum height: **30** inches
- Maximum width: **30** inches
- Corporate I.D. logos allowed
- Mounting height shall conform with the Manual on Uniform Traffic Control
- Directional signs should be located at the entrance to the road's interior to the PDD. These signs will be restricted to directing traffic to businesses located on the different roads, landscaping and lighting.

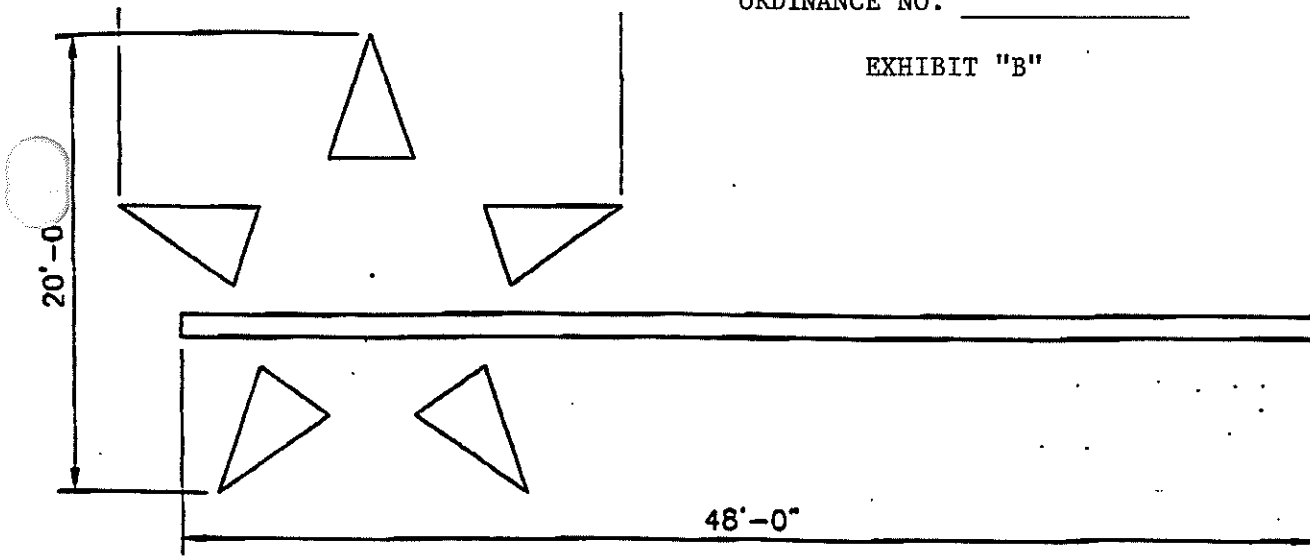
ADD: 16.

Internal Site Directional Signage:

- Post and panel system
- Single or double faced
- Maximum height: **60** inches
- Maximum width: **54** inches
- Corporate I.D. logos allowed
- Mounting height shall conform with the Manual on Uniform Traffic Control
- Directional signs should be located at the entrance to the road's interior to the PDD. These signs will be restricted to directing traffic to businesses located on the different roads, landscaping and lighting.

-END-

EXHIBIT "B"

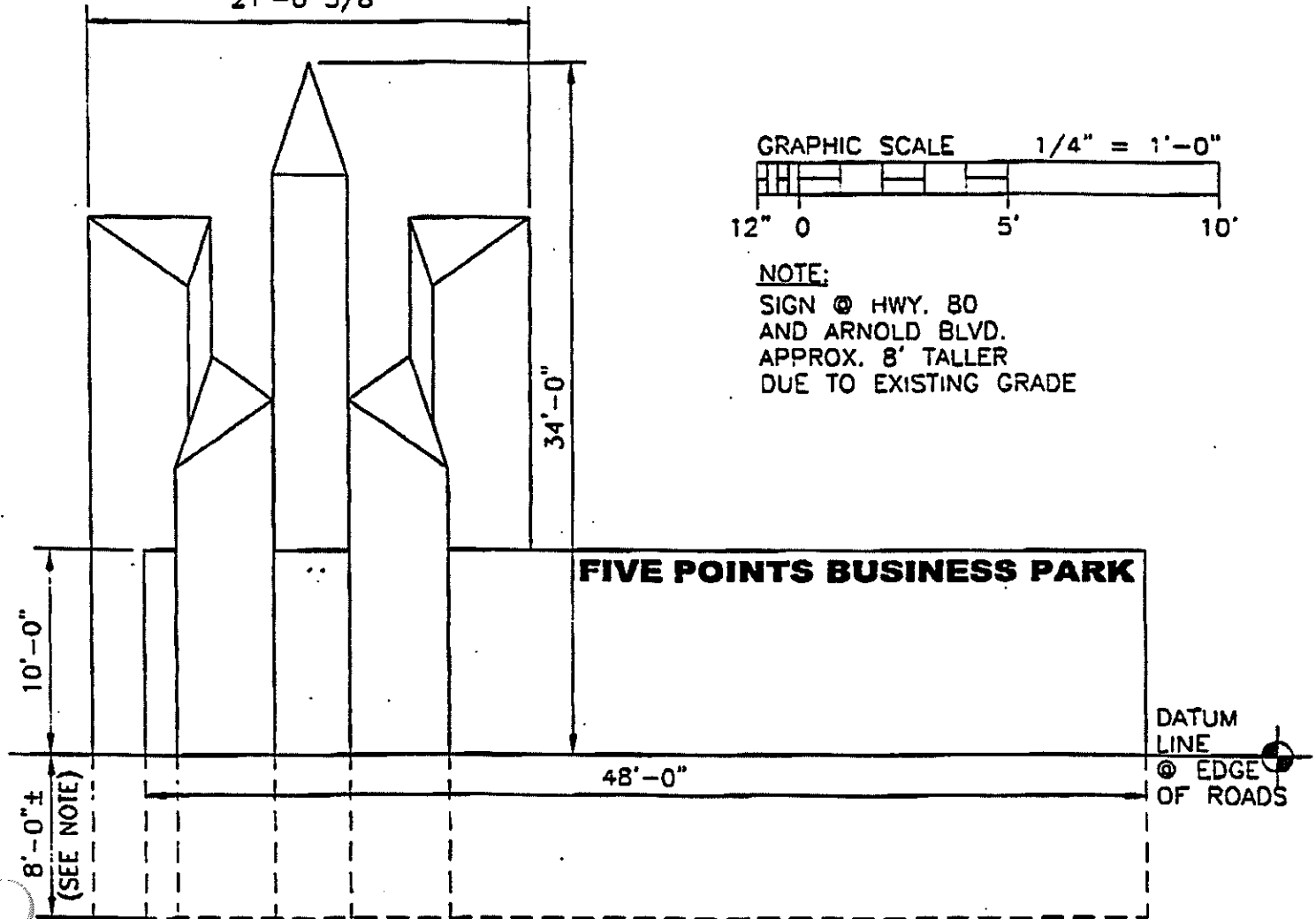


1

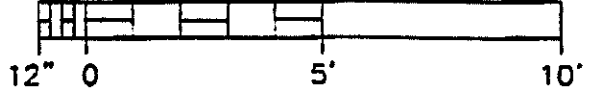
PLAN VIEW

SCALE: 1/4" = 1'-0"

21'-0 3/8"



GRAPHIC SCALE 1/4" = 1'-0"



NOTE:

SIGN @ HWY. 80  
AND ARNOLD BLVD.  
APPROX. 8' TALLER  
DUE TO EXISTING GRADE

FIVE POINTS BUSINESS PARK

DATUM  
LINE  
@ EDGE  
OF ROADS

2

FRONT ELEVATION

SCALE: 1/4" = 1'-0"