

ORDINANCE NO. 40-2012

AN ORDINANCE OF THE CITY OF ABILENE, TEXAS, AMENDING CHAPTER 23, SUBPART E, "LAND DEVELOPMENT CODE," OF THE ABILENE MUNICIPAL CODE, BY CHANGING THE ZONING DISTRICT BOUNDARIES AFFECTING CERTAIN PROPERTIES; CALLING A PUBLIC HEARING; PROVIDING A PENALTY AND AN EFFECTIVE DATE.

BE IT ORDAINED BY THE CITY COUNCIL OF THE CITY OF ABILENE, TEXAS:

PART 1: That Chapter 23, Subpart E, known as the Land Development Code of the City of Abilene, is hereby amended by changing the zoning district boundaries as set out in Exhibit "A," attached hereto and made a part of this ordinance for all purposes.

PART 2: That any person, firm or corporation violating any of the provisions of this chapter shall be deemed guilty of a misdemeanor, and upon conviction thereof, shall be punished by a fine of not more than Five Hundred Dollars (\$500.00). Each day such violation shall continue or be permitted to continue, shall be deemed a separate offense.

PART 3: That the Planning Director be, and is hereby authorized and directed to change the official Zoning Map of the City of Abilene to correctly reflect the amendments thereto.

PASSED ON FIRST READING this 23rd day of August, A.D. 2012.

A notice of the time and place, where and when said ordinance would be given a public hearing and considered for final passage, was published in the Abilene Reporter-News, a daily newspaper of general circulation in the City of Abilene, said publication being on the 19th day of July, 2012, the same being more than fifteen (15) days prior to a public hearing to be held in the Council Chamber of the City Hall in Abilene, Texas, at 8:30 a.m., on the 13th day of September, 2012 to permit the public to be heard prior to final consideration of this ordinance. Said ordinance, being a penal ordinance, becomes effective ten (10) days after its publication in the newspaper, as provided by Section 19 of the Charter of the City of Abilene.

PASSED ON SECOND AND FINAL READING THIS 13th day of September, A.D. 2012.

ATTEST:


CITY SECRETARY


MAYOR

APPROVED:


CITY ATTORNEY

ORDINANCE NO. 40-2012

EXHIBIT "A"

Rezone property from AO (Agricultural Open Space) to RS-6 (Single-Family Residential) District.

Legal Description:

Lot 1, Block A, Hiller Subdivision, as said Lot 1 is shown on a plat filed for recording with the Taylor County Clerk on August 8 of 1996, as file number 12984

-and-

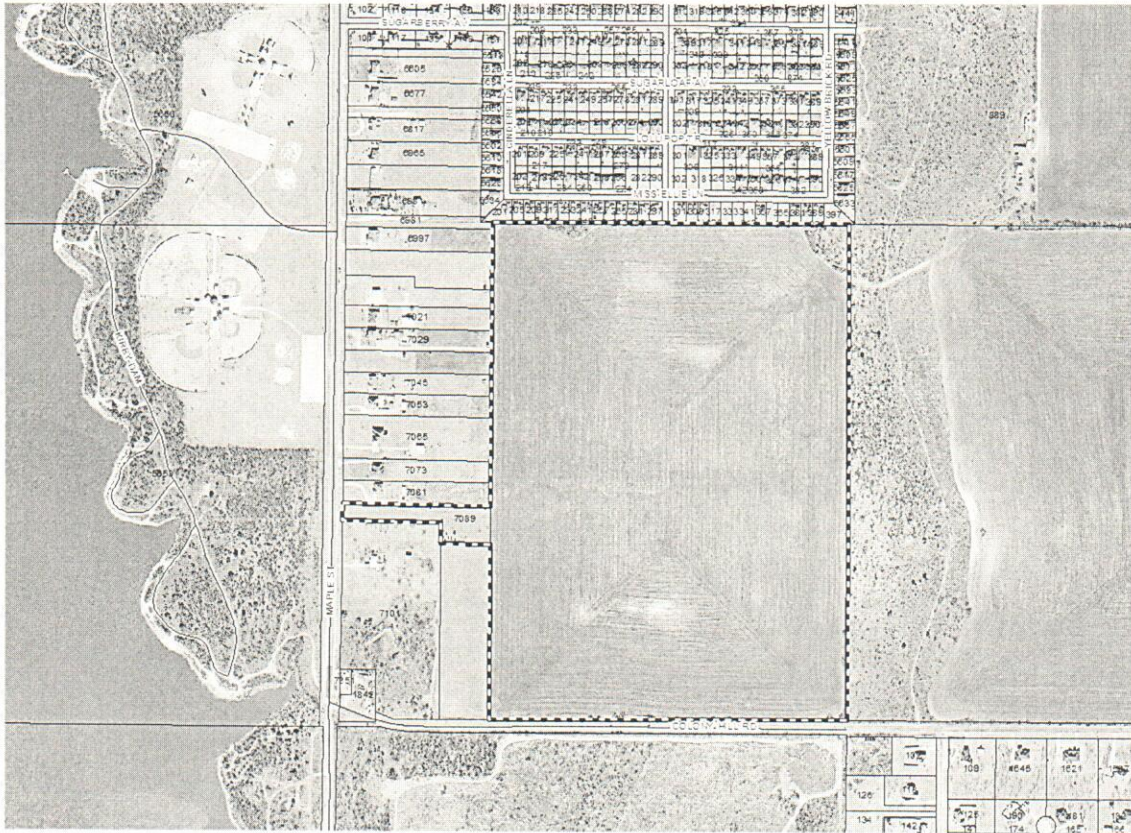
approximately 111-113 acres of land out of the southwest quarter of Section 8, Lunatic Asylum Lands in Taylor County, Texas and for which boundaries are more particularly described as follows:

bordered on the south by the north right-of-way line for Colony Hill Road;

bordered on the west by a line extending, from north to south, 769.06' to 754.37' east from and approximately parallel to the easternmost right-of-way line for Maple Street;

bordered on the north by the south boundary line of Park Place Subdivision, Section 2, as said subdivision is shown on a plat recorded on Slide 360-B in Cabinet 2 of the Taylor County Clerk's Plat Records; and

bordered on the east by a line separating the southwest from southeast quarters of Section 8, Lunatic Asylum Lands in Taylor County, Texas



Location:

2.20 acres at 7089 Maple Street
-and-

111-112 acres extending approximately 2600 feet north from Colony Hill Road and
approximately 762 to 2624 feet east from Maple Street, in southeastern Abilene

-END-